

Meet Belinda Allen

- Business Intelligence Program Manager (aka BA Nut) – PowerGP Online @ Njeivity, Inc.
- Microsoft MVP – Business Solutions
- GPUG All-Star
- Advisor – Association of Dynamics Professionals Credentialing Council
- PBIUG Advocate
- Author: 2 books
 - <http://bit.ly/belinda2>
 - <http://amzn.to/2mKn74l>



GPUG Summit Nashville | October 10-13, 2017 | #GPUGSummit



Agenda

- Publish to Power BI from Excel 2016 in Power BI
- Power BI Publisher for Excel
- Analyze in Excel
- Get Data in a Folder
- Query Editor / M Language

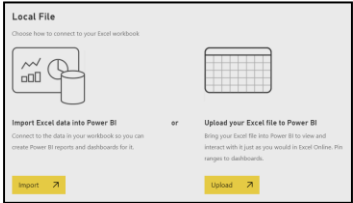
GPUG Summit Nashville | October 10-13, 2017 | #GPUGSummit





GPUG Summit Nashville | October 10-13, 2017 | #GPUGSummit

Publish to Power BI from Excel 2016 in Power BI



GPUG Summit Nashville | October 10-13, 2017 | #GPUGSummit



Publish to Power BI from Excel 2016 in Power BI

- Upload Your Workbook to Power BI
 - Report can be viewed and edited using the Excel Services
 - Some visuals can be pinned to Power BI
- Import Workbook Data to Power BI
 - Updates happen about every hour (OneDrive for Business)
 - Only data and Power View Reports come over

GPUG Summit Nashville | October 10-13, 2017 | #GPUGSummit



Publish to Power BI from Excel 2016

- Can publish from Local files (as of February 2017). *Only Excel 2016 with an Office 365 subscription will see the experience to publish with local files. Excel 2016 standalone installation will still have the "Publish" only behavior which requires the excel workbook be saved to OneDrive for Business or SharePoint Online.*
- If using OneDrive, the account you use to sign in to Office, OneDrive for Business, and Power BI must be the same account.
- You cannot publish an empty workbook or a workbook that doesn't have any Power BI supported content.
- You cannot publish encrypted or password protected workbooks, or workbooks with Information Protection Management.
- Publishing to Power BI requires modern authentication be enabled (default). If disabled, the Publish option is not available from the File menu.

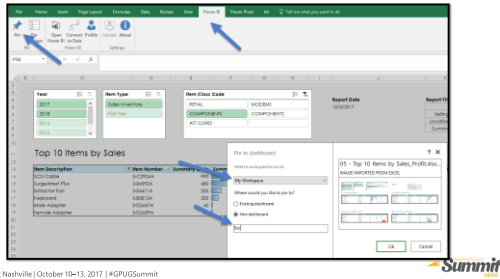
GPUG Summit Nashville | October 10-13, 2017 | #GPUGSummit





GPUG Summit Nashville | October 10-13, 2017 | #GPUGSummit

Power BI Publisher for Excel



GPUG Summit Nashville | October 10-13, 2017 | #GPUGSummit

[illegible]

Power BI Publisher for Excel

- Local Excel
- Excel Services report in Power BI
- <https://powerbi.microsoft.com/en-us/excel-dashboard-publisher/#>



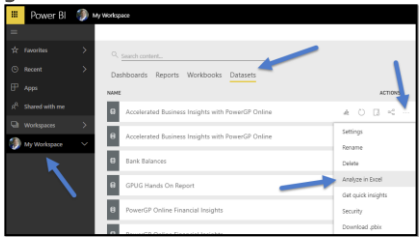
GPUG Summit Nashville | October 10-13, 2017 | #GPUGSummit

[illegible]

Analyze in Excel Demo



Analyze in Excel



GPUG Summit Nashville | October 10-13, 2017 | #GPUGSummit



Analyze in Excel

- Requires installation Excel Libraries (you'll be prompted to download, also know it requires a reboot.)
- Requires DAX Measures. IT DOES NOT AGGREGATE DATA (which means only DAX Measures will work as Values in Pivot Tables.

GPUG Summit Nashville | October 10-13, 2017 | #GPUGSummit



Analyze in Excel

- Downloads a *.ODC file, which has a MSOLAP connection string (connected to Power BI).
- Do not create a circle by publishing Analysis to Power BI.
- Refreshes with **Data | Refresh**.

GPUG Summit Nashville | October 10-13, 2017 | #GPUGSummit

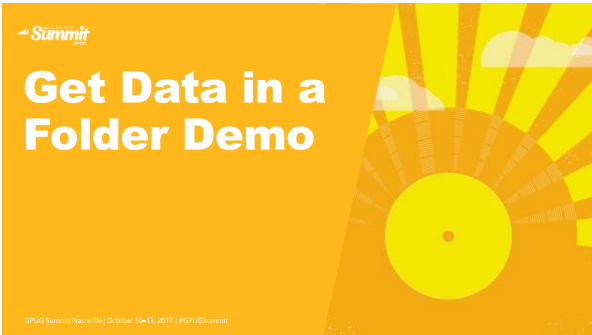


Want a DAX 101 Webinar?

• Share your business card with me.
"I solemnly swear not to share or spam your information with any individual or company, with the exception of GPUG and the Power BI User Group. I will only send 1 email with the link to this webinar."

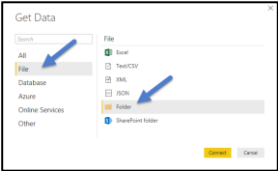
GPUG Summit Nashville | October 10-13, 2017 | #GPUGSummit





GPUG Summit Nashville | October 10-13, 2017 | #GPUGSummit

Get Data in Folder



GPUG Summit Nashville | October 10-13, 2017 | #GPUGSummit



Get Data in Folder

- Does not work with Excel files. See the following blog post, using M to make it work with Excel files. <http://exceleratorbi.com.au/combine-excel-workbooks-power-query-method-2/>
- When using Get & Transform in Excel, you'll need to exclude the header names from the rows.
- This is one of my favorite features!

GPUG Summit Nashville | October 10-13, 2017 | #GPUGSummit





GPUG Summit Nashville | October 10-13, 2017 | #GPUGSummit

Query Editor / M Language



GPUG Summit Nashville | October 10-13, 2017 | #GPUGSummit



Query Editor / M Language

- Not all Power Query feature in Power BI is available in Excel (e.g. Month Name).
 - Power BI gets updated every month, Excel does not.

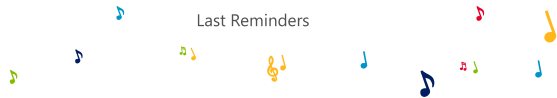
GPUG Summit Nashville | October 10-13, 2017 | #GPUGSummit





Q&A
Don't forget the Evals!





Complete Session Survey
What did you think of this session? We value your feedback in our efforts to continuously improve, please complete the session survey in the app or online at:
www.gpugsummit.com/surveys

Session Materials
The session materials can be found in the app or online in the event community library at:
www.gpugsummit.com/materials

Thanks and Have a Great Conference!

GPUG Summit Nashville | October 10-13, 2017 | #GPUGSummit

